

RK3399-AND-YPC ENDÜSTRİYEL BİLGİSAYAR

Adopt all-aluminum alloy structure, fanless and all-closed design, low power consumption of the whole machine, exquisite appearance, and more convenient use and installation; In terms of the materials used for the whole machine, we pay more attention to its reliability, environmental adaptability, practicality, scalability, EMC compatibility and other performance. The interface is rich and supports expansion. It can meet the access of a variety of external devices and provide a variety of working efficiency. It is widely used in industrial control, military, communication, power, network and other automation fields.

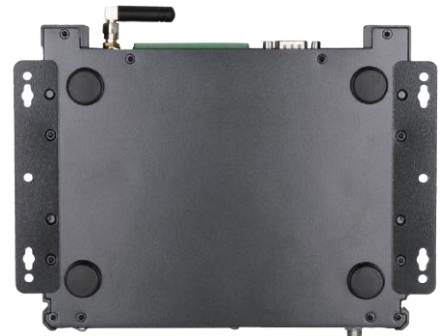
Product Features >>

- Exquisite and compact appearance, easy to install
- Self-developed ARM architecture motherboard, a variety of solutions to choose from
- Highly integrated, WiFi / Bluetooth / Ethernet triple play
- Provide API reference code, support SDK secondary development.
- Rich interfaces to meet the needs of a variety of external devices



Product Model >>

Product Model	processing unit
TPC01-AIOT	RK3399, dual-core Cortex-A72 1.8GHz+quad-core Cortex-A53 1.4GHz



Installation >>



Desktop mounting



Rack Mount

Parameter >>

configuration

CPU	RK3399, dual-core Cortex-A72 1.8GHz+quad-core Cortex-A53 1.4GHz
GPU	Mali-T860MP4
NPU	6TOPS AI arithmetic
Memory/RAM	4GB DDR3 (Optional 8GB)
Storage	32GB eMMC (Optional 64GB/128GB/256GB)
Decoding resolution	Supports up to 8K/60HZ
WiFi	Wi-Fi6, Dual-band 2.4G/5G
Bluetooth	BT5.0
Operating System	Android 7.1/9.0/11, Ubuntu18.04/Debian10.0/Linux4.4+QT

Reliability parameter

Working temperature	-10℃~60℃ (-20℃~70℃ can be customized)
Storage temperature	-20℃ ~70℃
Relative humidity	95% Non-Condensing

Other parameter

Power input	DC 12V-36V	Sizes	199.5*213.1*58.3 (L*W*H)
Power adapter	24V/2.5A	Weights	1.9KG
Chassis structure	Aluminium alloy for chassis face	Mounting method	Supports desktop and rack mounting
Body colour	Gun black	Warranty Policy	Three years (one year free warranty)

Interface parameter

USB	1*USB,1*OTG	Network interface	1*LAN, 10M/100M/1000M adaptive Ethernet
UBOOT	1* UBOOT	Audio interface	1*Audio I/O, Support audio input and output
COM	1* COM (1* RS232 interface)	SIM	1*SIM, Supporting various formats
HDMI	1*HDMI output, 1*HDMI input, up to 8K	TF	1*TF card standard interface
DC	1*Threaded DC connector (Diameter 5.5*2.1mm)		
Phoenix terminal	1*12P Phoenix terminal (DC/RS232*1/RS485*1/TTL*1/GPIO*3)		

I/O Interface >>



Dimension>>

